

Llano Uplift Archeological Society



Check out our LUAS website.

Newsletter
Volume 20, Issue 2
February 2012

LUAS meeting Wednesday, February 8th, 7 pm

LUAS meetings are free and open to the public and are held at The Nightengale Archaeological Center near Kingsland.

Mr. Charles Koenig will present information about his work in the field of plant baking facilities: "On The Burned Rock Trail: Earth Ovens and Land Use in the Lower Pecos Canyon Lands."



**Lower Pecos
Canyon Lands**

The 2011 Texas State University Lower Pecos Canyon Lands Archaeological Field School was held along Dead Man's Creek tributary to the Devils River. Ongoing survey work is being conducted on a 4,000 acre portion of Dead Man's Creek drainage on a large ranch. The survey is focusing on recording the distribution of earth oven plant baking facilities, or burned rock middens. This presentation will focus on different aspects of ongoing earth oven, and burned rock midden, research in the Lower Pecos as well as discussing current models of prehistoric land use, how earth ovens and burned rock middens fit into those models of land use, and how new survey data may change our view of land use in the Lower Pecos.

Charles Koenig is originally from Colorado and received his undergraduate degree in anthropology from the University of Colorado at Boulder in 2009. From 2009 through 2010, Charles worked as a research intern at the SHUMLA School recording rock art in the Lower Pecos Canyon Lands. Charles entered graduate school at Texas State University in the fall of 2010 under Dr. Steve Black. He has been doing his master's research on earth ovens and land use in the Lower Pecos Canyon Lands.

Here are some links to discussions about earth ovens:

<http://www.texasbeyondhistory.net/kids/dinner/rocks.html>

<http://www.texasbeyondhistory.net/bowie/middenwhat.html>



Llano Uplift Archeological Society

UPCOMING TAS EVENTS TO NOTE

CERAMICS: THE STORIES FOUND IN POTTERY

Texas A&M University, College Station

March 3-4, 2012

Registration Deadline: February 22, 2012

CERAMICS: THE STORIES FOUND IN POTTERY will be held at Texas A&M University in College Station March 3rd and 4th, 2012. This academy will impart the importance of archeological ceramics in terms of technology, chronology, dating, trade, subsistence and cultural identity. Participants will be informed through lectures and hands-on exercises, all provided by Dr. Harry Shafer.

OPEN TO ALL. All TAS Academies are intended for anyone interested in archaeological topics. No previous archaeological experience is necessary. Avocational archaeologists experience new dimensions of expertise; professional archaeologists benefit from review; students receive hand-on experience and teachers may receive Continuing Education credit for attending. Refreshments, as well as lunch, will be provided by the Texas Archeological Society.

The registration fee is for two days instruction: TAS member \$95; non members - includes individual membership \$155; non member includes family membership \$165; student non-member includes membership \$135 and also includes lunches (2) and a manual CD. A Certificate of Participation will be awarded to attendees. CPE credit will be available for teachers as approved by the Texas SBEC. See the TAS website for more information and registration options. www.txarch.org. For more information call 800 377-7240.

Here is a link to the Gault School for anyone interested in joining and supporting them:

<http://www.gaultschool.org/Support/Membership.aspx>

Finally:

There is a field trip planned for Feb. 18 to a pictograph site in San Saba County. Details will be given out the meeting and will be sent out by email to all members.

**Llano Uplift
Archeological Society**

P.O. Box 302
Kingsland, Texas

List of Officers
President: Al Priest
alpriest@live.com

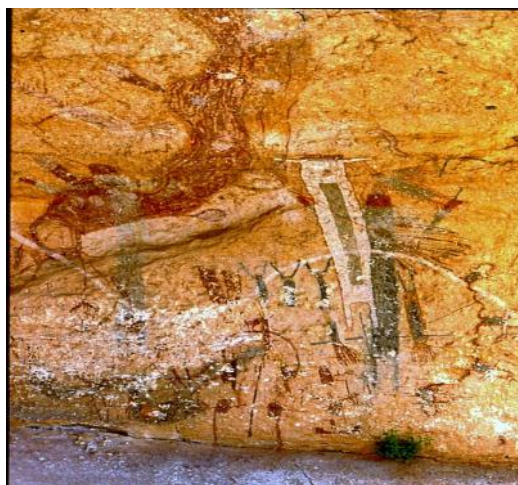
Treasurer: Jim Wukasch
wukasch4@yahoo.com

Secretary: Doris Howard



ON THE LIGHTER SIDE:

SPECIAL SUPERBOWL ANNOUCEMENT: For those not interested in the half-time Madonna fest, it is rumored that there will be a special ATLATL demo featuring the US Olympic Atlatl team trying to spear a hail mary pass by Peyton Manning. The winner gets buffalo steaks with baked lechugilla.



What is the name of this rock art site?

Where is it this rock art found?

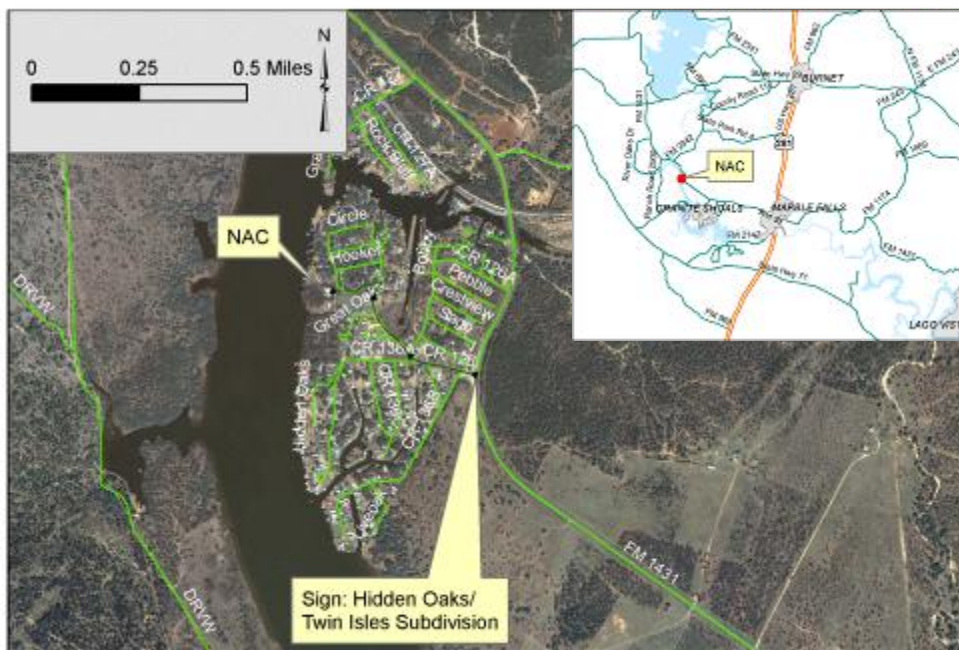
Special Notices

Calendar

Public tours at the Nightengale Archaeological Center. Second and fourth Saturdays 2-5pm
Volunteers always welcomed!!!
Check with Pat Hatten.

Note: To contribute to the newsletter or website please contact David Boyd—
dboyd@zeecon.com

*hardcopy newsletters are in black and white



Steward's News

Your local archeological steward is Doris Howard. If you have any questions about the archaeology of the area, she can be your first contact. Doris can be reached at (325) 247-2440

The Llano Uplift Archeological Society was organized by people interested in the protection, conservation and study of historic and prehistoric materials and sites in the Llano Uplift ("Central Mineral Region") area of the Texas Hill Country. Its primary goals include education of the membership, students and the public; and to support other groups, researchers and educators with similar interests. Stewardship of the Nightengale Archaeological Center is a major contribution of LUAS.