

Llano Uplift Archeological Society



Check out our LUAS website. Volunteer needed to update and maintain.

Newsletter
Volume 19, Issue 12
December 2011

LUAS Christmas Party Saturday, December 10th, 2011 4:00—6:00pm

LUAS meetings are free and open to the public and are held at The Nightengale Archaeological Center near Kingsland.

LUAS is hosting our Christmas party in place of the regular meeting. Please bring a favorite pot luck dish to share, or drinks or your favorite artifact to share.

There is no scheduled field trip for December. The next regular meeting will be January 11th, 2012, second Wednesday of the month.

From President Al Priest:

For those of you who were not able to attend the Gault field trip you missed a wonderful talk and tour hosted by Dr. Michael Collins. It was said by many they could have listened to him for hours. I must agree. It was my first visit and I can't believe I delayed so long. Ancient history is being rewritten right in our back yard! We look forward to working with the Gault School in the future. Special thanks to Nancy Velchoff for her hospitality and the hat as well.

Don't forget to sign up for the TAS Lithics Academy in Uvalde Feb. 4 and 5.

See you at our annual LUAS Christmas party at the Nightengale Center Dec. 10 from 4 to 6 PM. Bring family, finger food and whatever you want to drink.

Llano Uplift Archeological Society

Results of November 19th field trip to the Gault Site.

Many thanks to Jim Wukasch for arranging this field trip.



LUAS and other visitors at the Gault site excavation. This excavation is currently about 3 meters deep and is finding a possible pre-Clovis layer. Dr. Collins is at far right. Here are some links for a detailed discussion about Gault:

<http://www.gaultschool.org/Home.aspx>

<http://www.TexasBeyondHistory.net/gault/index.html>

http://www.tpwmagazine.com/archive/2011/nov/ed_1_archaeo/



Results of November 19th field trip to the Gault Site.

At left, Dr. Collins explaining geology, weather, and soils of the Gault site area in southern Bell County. The maps that are shown are available through the Bureau of Economic Geology.



At right, distance to important locations from the Gault Site. Note the number of buckets required.



Llano Uplift Archeological Society

Results of November 19th field trip to the Gault Site.



At left, Jim Wukasch and Corey Mullins finish deck behind the Gault site field house. Jim Wukasch personally, and LUAS made this possible through a large donation of time and money. The LUAS donation was made from the Fred Breckwoldt fund.

At right, Corey putting the final touches to the deck at the Gault site field house. The field house is used by volunteers working at Gault.



**Llano Uplift
Archeological Society**

P.O. Box 302
Kingsland, Texas

List of Officers
President: Al Priest
alpriest@live.com

Treasurer: Jim Wukasch
wukasch4@yahoo.com

Secretary: Doris Howard



Doris Howard, Dr. Collins, Al Priest (LUAS President); Jim Wukasch, Averi & Paige Wukasch (veteran TAS field school participants) with Nancy Velchoff of the Gault Site.



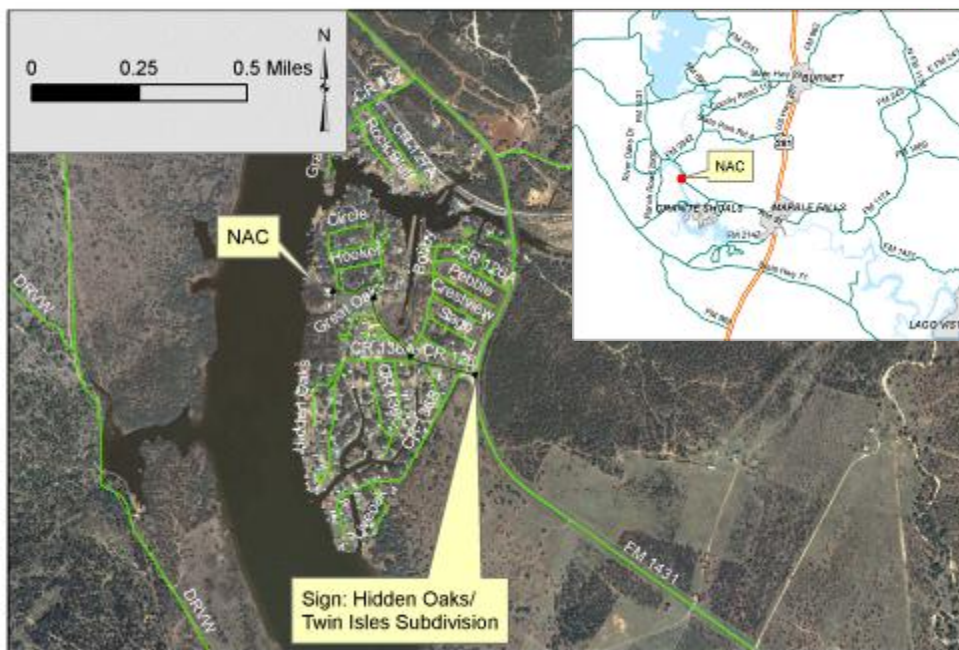
Special Notices

Calendar

Public tours at the Nightengale Archaeological Center. Second and fourth Saturdays 2-5pm
Volunteers always welcomed!!!
Check with Pat Hatten.

Note: To contribute to the newsletter or website please contact David Boyd—
dboyd@zeecon.com

*hardcopy newsletters are in black and white



Steward's News

Your local archeological steward is Doris Howard. If you have any questions about the archaeology of the area, she can be your first contact. Doris can be reached at (325) 247-2440

The Llano Uplift Archeological Society was organized by people interested in the protection, conservation and study of historic and prehistoric materials and sites in the Llano Uplift ("Central Mineral Region") area of the Texas Hill Country. Its primary goals include education of the membership, students and the public; and to support other groups, researchers and educators with similar interests. Stewardship of the Nightengale Archaeological Center is a major contribution of LUAS.