

Llano Uplift Archeological Society

Newsletter
Volume 19, Issue 8
August 6, 2011

LUAS Meeting—August 10, 2011, 7:00 P.M.

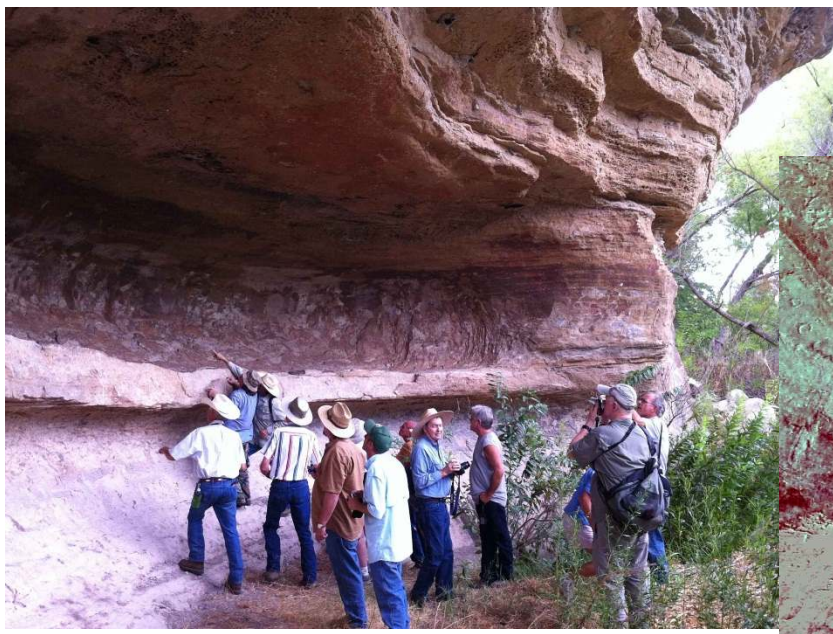
This month's presentation by Bob Wishoff will cover more information on the *Alibates Flint Quarries of the Texas Panhandle*. **Alibates National Monument** The new information will focus on a recent re-survey with fellow archeologists Britt Bousman and Chris Davis and the results are stunning.

Mr. Wishoff has a Masters in Anthropology with a focus on archeology from Texas State University, San Marcos. He is also the owner/webmaster of dirtbrothers.org, the largest archeology website on earth. The website is ten years old and is focusing more and more on education via college-level archaeology and anthropology course notes. He has been a chemist, editor/publisher of three books, promoter of Native American art, international freelance computer consultant and radio broadcaster.

LUAS meetings are free and open to the public.

July Field Trip — TBA

July Field Trip Results -Photos from Doris Howard and Chuck Hixson



Editor's note: these images have reportedly been recently "enhanced."

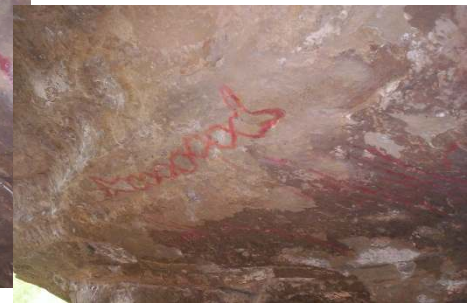
Llano Uplift Archeological Society

P.O. Box 302
Kingsland, Texas
78639

List of Officers
President: Al Priest
apriest@281.com

Treasurer: Tina Prikryl
cprikryl@austin.rr.com

Secretary: Doris Howard
dcatz@moment.net



Special Notices

Calendar

**Second and fourth Saturdays
2-5pm**

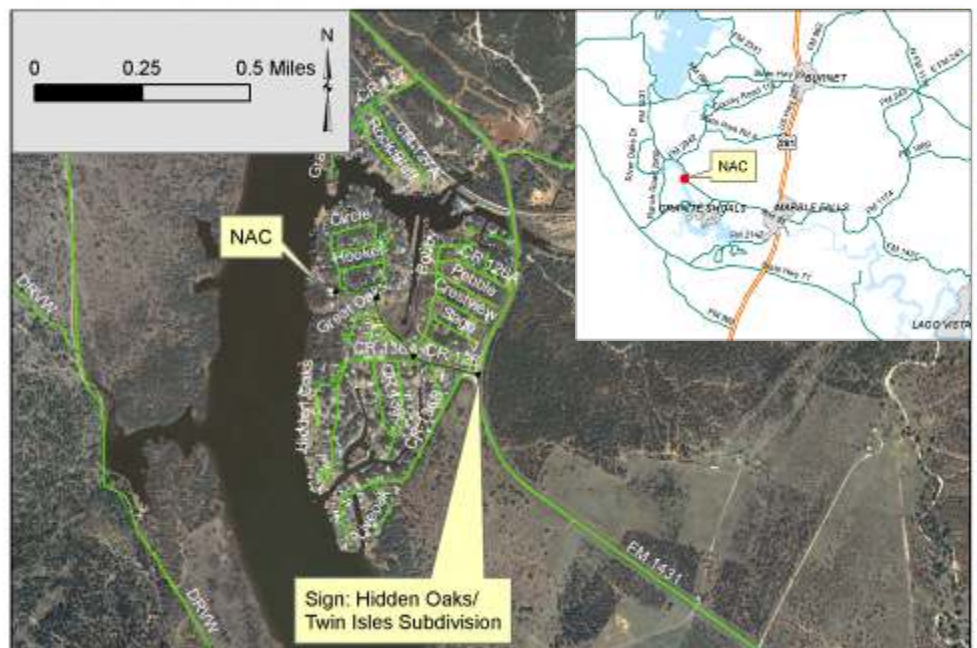
Public tours at the Nightengale
Center

Volunteers always welcomed!!!

Check with Pat.

Note: to contribute to the
newsletter or website please
contact Andy Malof—
amalof@austin.rr.com

*hardcopy newsletters are in
black and white



Steward's News

Your local archeological steward is Doris Howard. If you have any questions about the archaeology of the area, she can be your first contact. Doris can be reached at (325) 247-2440

The Llano Uplift Archeological Society was organized by people interested in the protection, conservation and study of historic and prehistoric materials and sites in the Llano Uplift ("Central Mineral Region") area of the Texas Hill Country. Its primary goals include education of the membership, students and the public; and to support other groups, researchers and educators with similar interests. Stewardship of the Nightengale Archaeological Center is a major contribution of