

Llano Uplift Archeological Society

Newsletter
Volume 19, Issue 6,7
July 8, 2011

Message from the President—Al Priest

We can safely say summer has arrived. It's hot,hot,hot. Those of you who were able to attend the TAS Field School should bring your pictures and stories to the meeting July 13th. I had to cancel at the last minute so I look forward to hearing all about it.



The new Nightengale signs for 1431 are now a reality. A big thanks to Beth Banks for making this happen. We hope to get them installed in the near future.

There was some excitement around the Center a few months ago. Mitch, our next door neighbor, and his worker were attacked by some really upset bees. Mitch jumped in the lake but the bees followed and waited for him to come up. His worker ran for it. The bees attacked their eyes and other places. Apparently you have to run at least 1/8 of a mile before the bees give up the chase. Lesson learned by all involved. They ended up with multiple stings but are doing fine. The word was sent out to stay away from the Nightengale until bee professionals could investigate but the culprits had vamoosed by then. For now at least the coast is clear.

See you the thirteenth and be sure to wear your bee-keeping regalia.

LUAS Meeting—July 13, 2011, 7:00 P.M.
LUAS members will share images and stories from the recent Texas Archeological Society's Annual Field School

LUAS meetings are free and open to the public.

July Field Trip — TBA

Llano Uplift Archeological Society

P.O. Box 302
Kingsland, Texas
78639

List of Officers

President: Al Priest

apriest@studiotechsupply.com

Treasurer: Tina Prikryl

cprikryl@austin.rr.com

Secretary: Doris Howard

dcatz@moment.net



Special Notices

Calendar

**Second and fourth Saturdays
2-5pm**

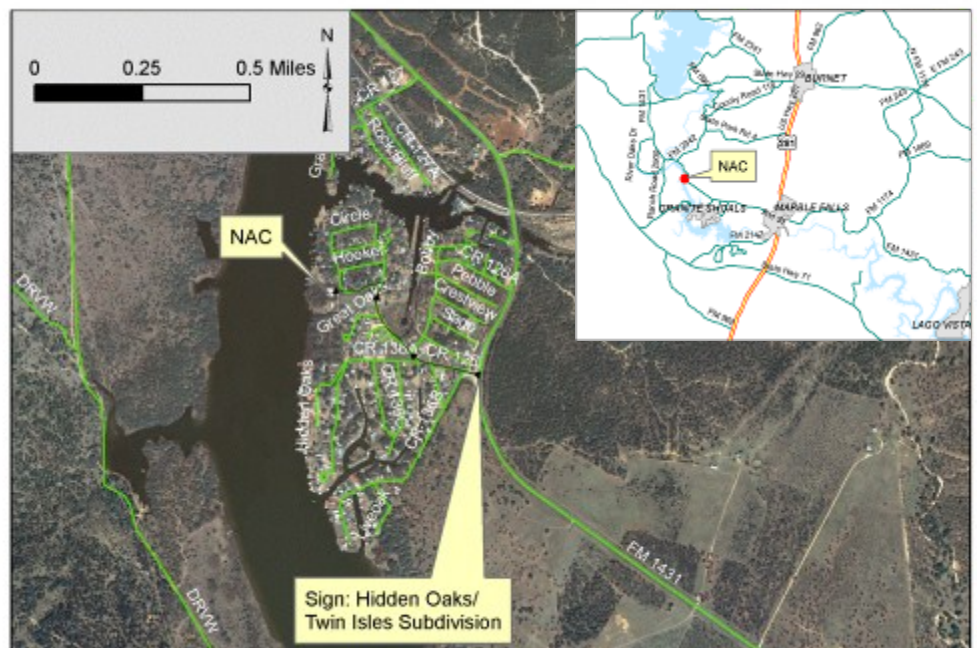
Public tours at the Nightengale
Center

Volunteers always welcomed!!!

Check with Pat.

Note: to contribute to the
newsletter or website please
contact Andy Malof—
amalof@austin.rr.com

*hardcopy newsletters are in
black and white



Steward's News

Your local archeological steward is Doris Howard. If you have any questions about the archaeology of the area, she can be your first contact. Doris can be reached at (325) 247-2440

The Llano Uplift Archeological Society was organized by people interested in the protection, conservation and study of historic and prehistoric materials and sites in the Llano Uplift ("Central Mineral Region") area of the Texas Hill Country. Its primary goals include education of the membership, students and the public; and to support other groups, researchers and educators with similar interests. Stewardship of the Nightengale Archaeological Center is a major contribution of