

Llano Uplift Archeological Society

Newsletter
Volume 19, Issue 5
May 9, 2011

Message from the President—Al Priest

If you were unable to attend last month's meeting you missed a great talk by Andy and some mighty good cookies brought by Patty and David!



Spring has sprung and summer has arrived way too early. We may be in for another hot one this year and we need rain BAD!

Don't forget the upcoming May 31 deadline for the TAS field school in Hondo Texas, Medina County, June 11-18.

LUAS Meeting—May 11, 2011, 7:00 P.M.

Speaker: Chris Davis

GIS in Archaeology

Our guest speaker will be Chris Davis on the topic of "GIS in Archaeology". He will be discussing the application of geographic information systems to archaeology by using examples from projects in which he has been involved.

Chris Davis has a Bachelor of Science in Anthropology with a minor in Geography. Over the course of his academic career, he has utilized geographic information systems software to apply to the field of Archaeology and has participated on several field projects, including a survey for the National Parks Service. After graduation, he plans to continue applying geographic information systems and photogrammetry to the field of archaeology, to aid in the preservation and understanding of non-renewable cultural resources.

LUAS meetings are free and open to the public.

**Llano Uplift
Archeological Society**

P.O. Box 302
Kingsland, Texas
78639

List of Officers

President: Al Priest

apriest@studiotechsupply.com

Treasurer: Tina Prikryl

cprikryl@austin.rr.com

Secretary: Doris Howard

dcatz@moment.net



Annual Field School, Texas Archeological Society
Then following text and images is from www.txarch.org



The Field School campground will be in both the Hondo City Park and the Medina County Fairgrounds just as last year. Camping will again be under the large oak trees that should have enough shade to accommodate just about all our participants.

Special Notices

Calendar

**Second and fourth Saturdays
2-5pm**

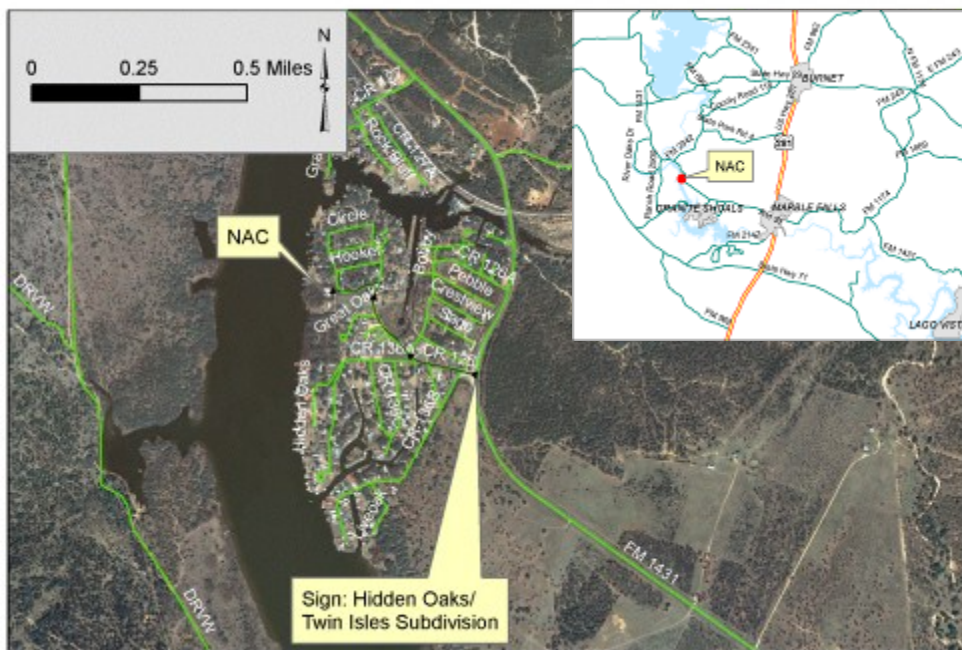
Public tours at the Nightengale Center

Volunteers always welcomed!!!

Check with Pat.

Note: to contribute to the newsletter or website please contact Andy Malof—
amalof@austin.rr.com

*hardcopy newsletters are in black and white



Steward's News

Your local archeological steward is Doris Howard. If you have any questions about the archaeology of the area, she can be your first contact. Doris can be reached at (325) 247-2440

The Llano Uplift Archeological Society was organized by people interested in the protection, conservation and study of historic and prehistoric materials and sites in the Llano Uplift ("Central Mineral Region") area of the Texas Hill Country. Its primary goals include education of the membership, students and the public; and to support other groups, researchers and educators with similar interests. Stewardship of the Nightengale Archaeological Center is a major contribution of