

# Llano Uplift Archeological Society

## Message from the President—Al Priest

I hope everyone had a great Thanksgiving!

Thanksgiving has come and gone and the weather is getting colder. Christmas is right around the corner. Just a reminder that there will be no Wednesday meeting this month but it is time for the LUAS Holidays party on Saturday December 11 from 4 – 6 PM at the Nightengale Center. Bring your family and friends and some munchies for this great time of fellowship and fun!

See you there,

Al Priest



## LUAS Holiday Party—Saturday December 11, 4-6 P.M. at the Nightengale Archaeological Center

Note: There is NOT a regular meeting this month

Newsletter  
Volume 18, Issue 12  
December 4, 2010



## November Field Trip-Results

Photos by Doris Howard and Chuck Hixson



## Llano Uplift Archeological Society

P.O. Box 302  
Kingsland, Texas  
78639

List of Officers

President: Al Priest

[apriest@studiotechsupply.com](mailto:apriest@studiotechsupply.com)

Treasurer: Tina Prikryl

[cprikryl@austin.rr.com](mailto:cprikryl@austin.rr.com)

Secretary: Doris Howard

[dcatz@moment.net](mailto:dcatz@moment.net)



## Special Notices

### Calendar

**Second and fourth Saturdays  
2-5pm**

Public tours at the Nightengale  
Center

Volunteers always welcomed!!!

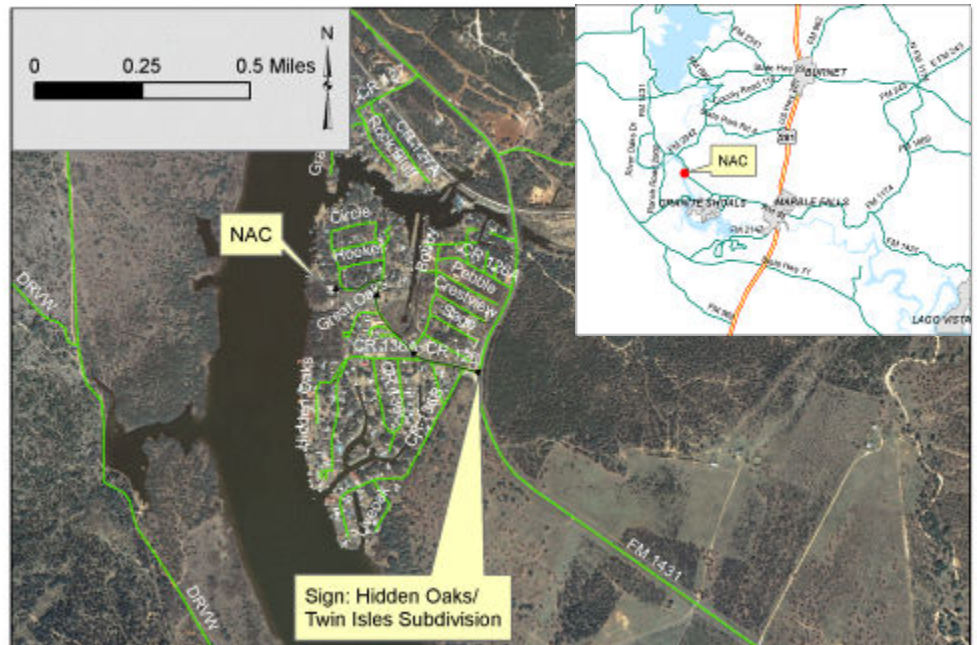
Check with Pat.

**Note:** to contribute to the  
newsletter or website please  
contact Andy Malof—  
[amalof@austin.rr.com](mailto:amalof@austin.rr.com)

\*hardcopy newsletters are in  
black and white

### Steward's News

Your local archeological steward is Doris Howard. If you have any questions about the archaeology of the area, she can be your first contact. Doris can be reached at (325) 247-2440



The Llano Uplift Archeological Society was organized by people interested in the protection, conservation and study of historic and prehistoric materials and sites in the Llano Uplift ("Central Mineral Region") area of the Texas Hill Country. Its primary goals include education of the membership, students and the public; and to support other groups, researchers and educators with similar interests. Stewardship of the Nightengale Archaeological Center is a major contribution of LUAS.